



SAILING INSTRUCTIONS

The International J/111 Class Association, in conjunction with the Ida Lewis Yacht Club welcome competitors to the World Championship in Newport, Rhode Island, USA, with racing from June 16 to June 19, 2015.

1 RULES

- 1.1 The regatta will be governed by the rules as defined in *The Racing Rules of Sailing* (RRS) and the current J/111 Class Rules.
- 1.2 The prescriptions of US Sailing to *The Racing Rules of Sailing* listed in Attachment A of these Sailing Instructions.
- 1.3 The following racing rules are changed:
29.1, 30.3, 35, 44.1, 44.2, 60.1(a), 60.1(b), 61.3, 62.1(a), 62.2, 63.7, 64.1, 66, A2, A4, A5, Race Signals
- 1.4 The jury may impose suitable penalties, other than disqualification, for violations of non-Part 2 rules of RRS. This changes RRS 64.1.
- 1.5 If there is a conflict between languages, the English text will take precedence.
- 1.6 RRS 63.7 will be replaced by: "If there is a conflict between a rule in the Notice of Race and one in the Sailing Instructions, the Sailing Instructions shall apply." This changes RRS 63.7.

2 BOW NUMBERS

Boats shall display the provided bow numbers in the position as directed by the OA. They shall be displayed on both sides of the boat's hull at all times while racing. It is the responsibility of the crew to ensure the numbers remain on the boat and obtain replacements as necessary.

3 NOTICES TO COMPETITORS

- 3.1 Notices to competitors will be posted on the official notice board located on the west side of the Ida Lewis Yacht Club club house.
- 3.2 Any questions regarding the sailing instructions shall be submitted in writing to the race committee. The question(s) and any answers will be posted on the official notice board as soon as possible.

4 CHANGES TO SAILING INSTRUCTIONS

Any change to the sailing instructions will be posted before 0830 on the day it will take effect, except that any change to the schedule of races will be posted by 1800 or the end of protest time, whichever is later, on the day before it will take effect.

5 SIGNALS MADE ASHORE

- 5.1 Signals made ashore will be displayed on the flag pole at the Ida Lewis Yacht Club.
- 5.2 When flag AP is displayed ashore, '1 minute' is replaced with 'not less than 60 minutes' in the race signal AP. This changes RRS race signals.
- 5.3 Signals designating the rendezvous location (the two rendezvous locations are shown in SI Attachment B) will be displayed at 1100 hours on Tuesday, June 16, and 0900 each morning of racing thereafter from the flagpole at Ida Lewis Yacht Club. The Race Committee will endeavor to announce the location at that time over VHF Channel 72.

- 5.4 On the day that the Race Committee intends to run the Distance Race, the Race Committee will endeavor to announce that fact following the announcement of the rendezvous location.

6 SCHEDULE

6.1

DATE	TIME	EVENT
Friday, June 12	0900	Crew Weigh In
	1000	Sail Measurement and Boat Inspection
Monday, June 15	0900	Registration Sail Measurement Crew Weigh In
	1800	Opening Ceremony
Tuesday, June 16	0900	Late Crew Weigh-In
	0900	Owners Meeting Competitors' Briefing Ida Lewis YC
Wednesday, June 17	1300	Race Day 1 First Warning Signal
	After Sailing	After Racing Social
	0830	Competitors' Briefing Ida Lewis YC
	1100	Race Day 2 First Warning Signal
Thursday, June 18	After Sailing	After Racing Social
	0830	Competitors' Briefing Ida Lewis YC
	1100	Race Day 3 First Warning Signal
Friday, June 19	1800	Regatta Dinner
	0830	Competitors' Briefing Ida Lewis YC
	1100	Race Day 4 First Warning Signal
	After Sailing	Prize Giving

- 6.2 The Race Committee, in consultation with the IJCA representative and the Chief Judge, may deviate from the above schedule
- 6.3 On Friday, June 19, the warning signal for a race shall not be made after 1400 hours, unless posted by 2100 hours on Thursday, June 18. However, in the case of one or more general recall(s) when the initial warning signal was made prior to 1400 hours, the race committee may display subsequent warning signals after that time for one additional race. This exception will not apply for a race that is postponed or abandoned.
- 6.4 Eight (8) windward leeward races and one distance race are scheduled. Five races are required for a regatta.
- 6.5 No more than three races will be run on any one day.
- 6.6 On the day the Distance Race is scheduled, a maximum of one windward-leeward race may be scheduled. If one windward-leeward race is scheduled, it will be the first race of the day.

7 CLASS FLAGS

The class flag shall be a flag with the J/111 insignia.

8 RACE AREA

The races will be sailed on the waters of Rhode Island Sound or Narragansett Bay. See SI 5.3 and SI Attachment B.

9 THE COURSES

9.1 The courses to be sailed will be a windward-leeward course using drop marks, and a multi-leg distance course using government marks, the 2015-2017 South Bay Race Chart marks and various special marks as identified in Attachment C.

9.2 For the Windward-Leeward course only:

9.2.a An offset mark will be used in conjunction with the weather mark. The leeward mark will be a gate.

9.2.b Approximately five minutes prior to the warning signal for each race, the race committee signal boat will display the course designation, the approximate magnetic bearing to the windward mark and the approximate distance in nautical miles and tenths to the windward mark, as shown below, and broadcast this information on VHF channel 72. Failure to broadcast or to receive this notification shall not constitute grounds for granting redress. This changes RRS 60.1(b) and 62.1(a).

W	4	
2	1	5
1	.5	

9.2.c Courses:

Course W4 Start - 1 - 1a - Gate - 1 - 1a - Finish (Downwind)

Course W5 Start - 1 - 1a - Gate - 1 - 1a - Gate - Finish (Upwind)

Course W6 Start - 1 - 1a - Gate - 1 - 1a - Gate - 1 - 1a - Finish (Downwind)

9.2.d Marks 1 and 1a shall be left to port. Mark 1a is an offset mark and will be positioned to port of mark 1.

9.2.e If only one gate mark is present, boats shall leave the single mark to port.

9.2.f Except when there is a change of course, the gate will be positioned to windward of the RC signal boat.

9.2.g Except for when there is a change of course:

(a) the downwind finish line for course 4 and 6 will be to leeward of the gate; and

(b) the upwind finish line for course 5 will be to windward of mark 1.

9.3 For the Distance Race Only – SEE Attachment C

10 MARKS

10.1 Description of the Marks For Windward-Leeward Races

	Original Marks	New Marks per SI 13
Mark 1	Yellow inflatable mark	Orange inflatable mark
Mark 1A	Orange Ball mark	Orange Ball mark
Gate (2P/2S)	Yellow inflatable marks	Orange inflatable marks
Start	RC boats	RC boats
Finish	RC boat and Orange mark	RC boat and Orange mark

10.2 Description of Marks For the Distance Race – SEE Attachment C

11 AREAS THAT ARE OBSTRUCTIONS

In the event there is racing in Narragansett Bay, competitors should be aware of heightened security around the Navy base in Newport just to the north of the Newport Jamestown Bridge. The area to the east of a line defined by a series of white buoys marking the Newport Security Zone along the coast of the Naval Facilities from Coasters Harbor to the breakwater at the north end of Coddington Cove shall rank as an obstruction. Yachts shall not enter this area. A Navy patrol boat monitors the area and vessels navigating in the Exclusionary Zone may face action by Coast Guard and Naval authorities.

12 THE START

12.1 Races will be started in accordance with rule 26.

12.2 A yacht starting later than 5 minutes after her starting signal will be scored Did Not Start without a hearing. This changes rules A4 and A5.

12.3 The starting line will be between a staff displaying an Orange flag on the Race Committee Signal Boat at the starboard end and a staff displaying an Orange flag on the port end starting line boat.

12.4 The bow or sail numbers of boats subject to individual recall (RRS 29.1) and boats disqualified under RRS 30.3 may be broadcast on the VHF channel 72. This is in addition to and changes RRS 29.1 and 30.3..

12.5 After a general recall for a start that used starting penalty RRS 30.2 (Z Flag Rule), the RC will attempt to broadcast on VHF channel 72 the bow or sail numbers of boats that are observed to be ZFP.

12.6 Failure of the RC to make a broadcast or to time it accurately or the order of boat(s) hailed will not be grounds for granting a request for redress. This changes RRS 62.1(a).

13 CHANGE OF THE NEXT LEG OF THE COURSE –Windward-Leeward Races

13.1 For Windward-Leeward Races - To change the next leg of the course, the race committee will lay a new mark (or move the finishing line) and remove the original mark as soon as practicable. When in a subsequent change a new mark is replaced, it will be replaced by an original mark.

13.2 For the Distance Race- SEE Attachment C

14 THE FINISH

14.1 For Windward-Leeward Races

14.1(a) For downwind finishes, the finishing line will be between a staff displaying an Orange flag on the race committee boat displaying a Blue flag and the course side of the nearby inflatable finishing mark. The finishing line for windward-leeward courses W4 and W6 will be located to leeward of the leeward gate.

14.1(b) For windward finishes, the finishing line will be between a staff displaying an Orange flag on the race committee boat displaying a Blue flag and the course side of the nearby inflatable finishing mark. The finishing line for windward-leeward course W5 will be located to windward of the windward mark.

14.2 For the Distance Race-SEE Attachment C

15 PENALTY SYSTEM

15.1 Penalties at the time of the incident

The first two sentences of rule 44.1 are changed to: ‘A boat may take a One-Turn Penalty when she may have broken a rule of Part 2 or rule 31 while *racing*. However, when she may have broken a rule of Part 2 while in the *zone* around a *mark* other than a starting *mark*, her penalty shall be a Two-Turns Penalty.’

15.2 Unless the course is shortened to finish at the windward mark, penalties while in the zone of the windward mark or on the offset leg shall be delayed and taken as soon as possible on the downwind leg. This changes RRS 44.2.

15.3 A boat that has taken a penalty under RRS 31 or 44.1 shall complete an acknowledgement form at the jury office or complete the online form within the protest time limit.

16 TIME LIMITS

16.1 Windward-Leeward Races

16.1(a) Boats failing to finish a windward-leeward race within 30 minutes after the first boat sails the course and finishes will be scored "TLE" (Time Limit Expired) without a hearing. The score for TLE shall be finishers for that race plus 1. This changes RRS 35, A4 and A5. The RC will lower the blue flag with one sound to indicate that the finish line is closed.

16.1(b) The time limit for the first boat to sail the windward-leeward course and finish is two hours. If no boat has passed the first mark within 40 minutes, the race will be abandoned.

16.2 The Distance Race- SEE Attachment C

17 PROTESTS AND REQUESTS FOR REDRESS

17.1 A boat shall report and receive acknowledgement of its intention to protest and the yacht being protested immediately after the finish of the race to the Race Committee by radio on VHF 72.

17.2 The jury desk and jury room will be located in the Sail Newport Waterfront Center adjacent to Fort Adams. On Thursday evening, the jury office may be moved to Ida Lewis Yacht Club and competitors will be so notified by regatta notice.

17.3 Protest forms, penalty acknowledgement and Scoring Enquiry forms will be available at the jury desk.

17.4 Protests and requests for redress or reopening shall be delivered to the jury desk within the appropriate time limit.

17.5 The protest time limit is 60 minutes after the race committee signal boat docks. The protest time limit will be posted on the official notice board. The same time limit applies to protests by the race committee and jury about incidents they observe in the racing area and for requests for redress. This changes RRS 61.3 and 62.2.

17.6 Notices will be posted no later than 30 minutes after the protest time limit to inform competitors of hearings in which they are parties or named as witnesses.

17.7 Notices of protests by the RC or jury will be posted to inform boats under RRS 61.1(b).

17.8 Breaches of SI 2, 15.3, 19, 23, 24, 25, 26 and 28 will not be grounds for a protest by a boat. This changes RRS 60.1(a). Penalties for these breaches will be at the discretion of the jury.

17.9 On the last scheduled day of racing a request for reopening a hearing shall be delivered

- (a) within the protest time limit if the requesting party was informed of the decision on the previous day;
- (b) no later than 30 minutes after the requesting party was informed of the decision on that day.

This changes RRS 66.

17.10 On the last scheduled day of racing a request for redress based on a jury decision shall be delivered no later than 30 minutes after the decision was posted. This changes RRS 62.2.

17.11 Decisions of the jury will be final as provided in RRS 70.5.

18 SCORING

18.1 The regatta will be scored as provided in Appendix A using the Low Point System.

18.2 When fewer than six races have been completed, a boat's series score will be the total of her race scores. When six or more races are completed, a boat's series score will be the total of her race scores excluding her worst score. This changes RRS Appendix A2.

19 SAFETY REGULATIONS

19.1 Before the warning signal, of the first race each day, each boat shall check in with the Race Committee by sailing on starboard tack, past the stern of the Race Committee Signal Boat displaying code flag LIMA, and hailing her bow number until acknowledged by the Race Committee by repeating the boat's bow number. Boats in the starting area and the Race Committee may use VHF channel 72 to check, and acknowledge respectfully.

19.2 Boats that retire from a race shall notify the race committee as soon as possible.

19.3 Boats that leave the racing area between races shall notify the race committee as soon as possible.

19.4 Boats not leaving the harbor for any of the day's racing shall so inform the RC.

20 REPLACEMENT OF CREW OR EQUIPMENT

20.1 Substitution of competitors will not be allowed without prior written approval of the race committee.

- 20.2 Substitution of damaged or lost equipment will not be allowed unless authorized by the race committee. Requests for substitution shall be made to the committee at the first reasonable opportunity.

21 EQUIPMENT AND MEASUREMENT CHECKS

- 21.1 A boat or equipment may be inspected at any time for compliance with the class rules and sailing instructions. On the water, a boat can be instructed by a measurer or RC equipment inspector to proceed immediately to a designated area for inspection.
- 21.2 In accordance with RRS G3, a boat chartered or loaned for this event may carry national letters or a sail number in contravention of the Class Rules.

22 OFFICIAL BOATS

Official boats will be marked as follows:

RC signal and pin boats



RC mark boats



23 SUPPORT BOATS

- 23.1 Support or coach boats shall not have contact of any nature, including:
- (i) communication by radio, telephone, internet, vocal signal, visual signaling of any kind (i.e., tactical placement, use of flags and/or different colors of clothing) or
 - (ii) the transfer of crew, equipment or supplies,
- with a registered racing boat from the time the boat leaves its dock or mooring each day until the boat has finished racing for the day.
- Notwithstanding the foregoing, (i) late arriving crew, food and drink may be transferred to a racing boat prior to the first race of the day, and (ii) crew may be transferred in the event of an unforeseen personal emergency. Infringements of this rule will result in a penalty to the boat associated with the support boat. Such penalty may be either penalties or disqualification at the discretion of the protest committee or jury.
- 23.2 Support Boats and operators shall register with the OA during registration.
- 23.3 Support Boats, including coach and spectator boats, shall clearly display the flag provided by the OA. These boats shall stay below the starting line during the starting sequence, shall stay outside the racing area, and at least 100 yards from any boat that is racing. In addition, support boats shall not cause a wake that disturbs any racing boat.

24 BERTHING

Boats shall be kept in their assigned places as directed by the OA when either afloat or ashore.

25 RADIO COMMUNICATION and ELECTRONIC EQUIPMENT

- 25.1 All boats must carry a marine band VHF receiver capable of receiving normal international channels. Boats shall report to the Race Committee their retirement from racing via VHF and may use the radio to request assistance in an emergency. Boat may also report to the Race Committee their intention to protest, and the bow or sail number of the boat they intend to protest. No other transmissions are permitted by competing yachts during each racing day from the first Warning Signal until the end of the last race of the day. This supplements but does not change RRS 2 and 41.
- 25.2 The Race Committee may use VHF channel 72 to advise competitors of race information.
- 25.3 A boat shall not receive help from any outside source, except help in the form of information which is freely available to all boats. This may include navigational, weather or tide information, but shall not include any information gathered or the subject of interpretation by, or any advice received from, any source not on board the boat and which is specific to the boat and her situation. By way of example and interpretation, downloading charts, weather and/or GRIB files from subscription services, or having such information passed

to the boat in its pure form, is permitted, but receiving messages or information which is the result of interpretation as it applies to the boat is not permitted.

25.4 The use of Radar and GPS while racing are permitted.

26 PRIZES

26.1 The J/111 Worlds Perpetual Trophy will be presented to the winner.

26.2 Keeper trophies will be presented to the top five boats.

27 LIABILITY & MEDIA WAIVER

27.1 Competitors participate in the regatta entirely at their own risk. It is the competitor's decision to enter the Championship or to start or continue in any race. Competitors' attention is drawn to RRS Fundamental Rule 4, which states: "The responsibility for a boat's decision to participate in a race or to continue racing is hers alone."

27.2 The Organizing Authority is not responsible for the seaworthiness of a yacht whose entry is accepted or the sufficiency or adequacy of its equipment. The Organizing Authority will not accept any liability for material damage or personal injury or death sustained in conjunction with, prior to, during or after the regatta.

27.3 Each competitor is required to complete and submit an online liability and media waiver prior to the close of registration. The waiver is be available on the official regatta website.

28 INSURANCE

28.1 Each participating boat shall be insured with valid third-party liability insurance on a yacht policy that includes U.S. coverage, and shall be maintained during the period of racing with a minimum coverage of US \$1,000,000 per incident.

28.2 Evidence of insurance, as described in NOR 17.1, shall be provided at registration.

29 FURTHER INFORMATION

For further information, please contact the OA at:

Christopher Howell
International J/111 Class Representative
howell@j111class.com
+1 216 226-4411

Pat Connerney
Event Chairman
paconnerney@gmail.com

Peter Gerard
Principal Race Officer
Pgerard53@gmail.com
+1 214 244-4955

Robert Duffy
Chief Judge
Rduffy@logic.bm

Ned Jones
Measurer
ned@jboats.com
+1 401 846-8410

Kendra Muentner
J Boats Representative
kendra@jboats.com
+1 401 846-8410

SAILING INSTRUCTIONS ATTACHMENT A- US Sailing Prescriptions

The US SAILING prescriptions to the *Racing Rules of Sailing* in this Appendix shall apply.

Rule 61.4 Add rule 6.1.4

61.4 *Fees for Protests and Requests for Redress*

US SAILING prescribes that no fees shall be charged for protests or requests for redress.

Rule 67 After rule 67 add ***US SAILING prescribes that:***

- (a) A boat that retires from a race or accepts a penalty does not, by that action alone, admit liability for damages.***
- (b) A protest committee shall find facts and make decisions only in compliance with the rules. No protest committee or US SAILING appeal authority shall adjudicate any claim for damages. Such a claim is subject to the jurisdiction of the courts.***
- (c) A basic purpose of the rules is to prevent contact between boats. By participating in an event governed by the rules, a boat agrees that responsibility for damages arising from any breach of the rules shall be based on fault as determined by application of the rules, and she shall not be governed by the legal doctrine of "assumption of risk" for monetary damages resulting from contact with other boats.***

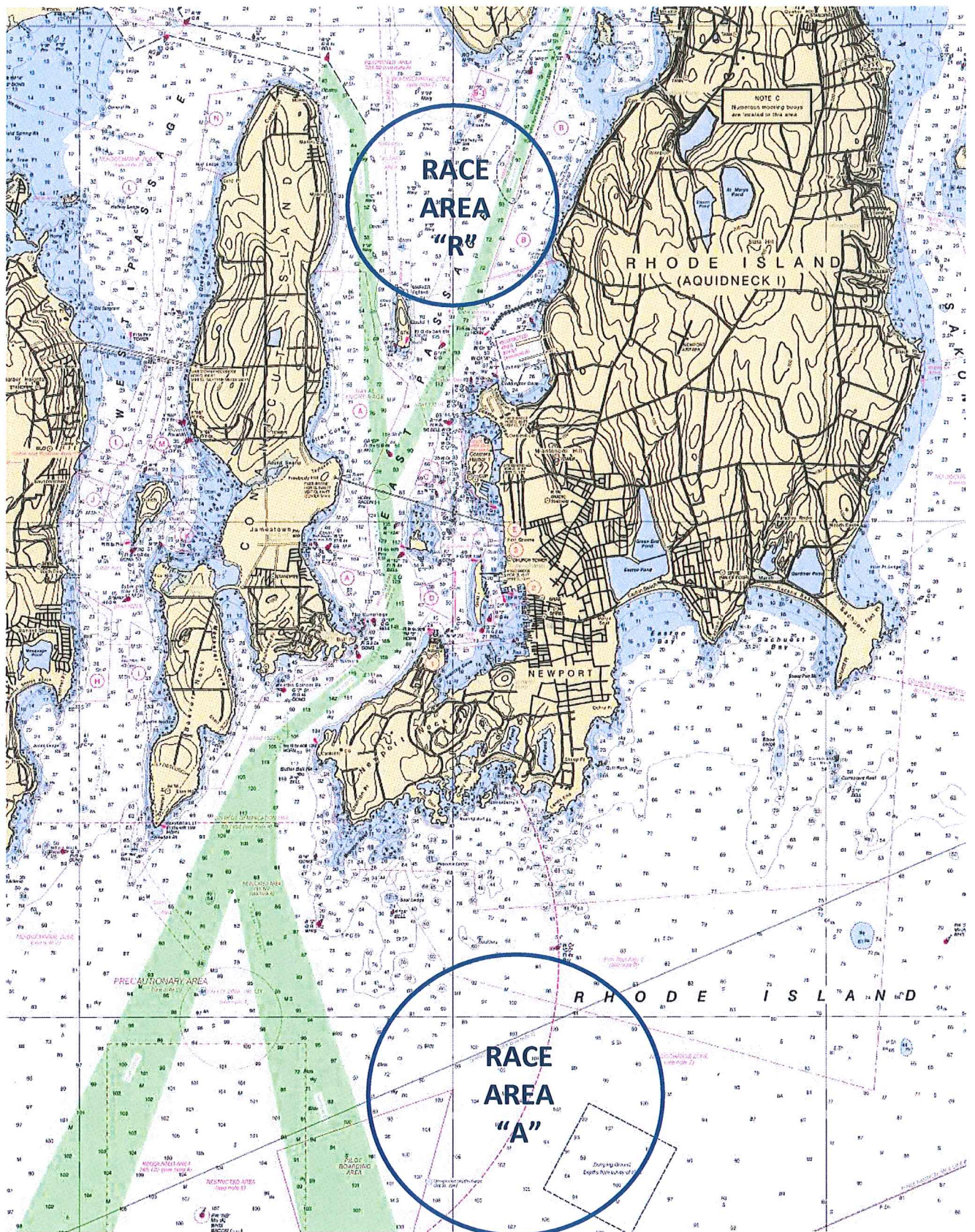
Rule 76.1 After rule 76.1 add

US SAILING prescribes that the organizing authority or race committee shall not reject or cancel the entry of a boat or exclude a competitor eligible under the notice of race and sailing instructions for an arbitrary or capricious reason or for reason of race, color, religion, national origin, gender, sexual orientation, or age.

Rule 88.2 After rule 88.2 add

US SAILING prescribes that sailing instructions shall not change or delete rules 61.4, Appendix R, or its prescriptions to rules 40, 67, or 76.1. However, for an international event, the prescriptions to rule 40 may be deleted.

SAILING INSTRUCTIONS ATTACHMENT B—Racing Areas



SAILING INSTRUCTIONS - ATTACHMENT C- Distance Race

1. SCHEDULE

- A. The Race Committee intends to run one, and only one, distance race as part of the regatta.
- B. The Race Committee intends to announce its intention to run the Distance Race that day following the announcement of the rendezvous area at 0900.
- C. On the day of the distance race, the Race Committee may run a maximum of one windward/leeward race in addition to the distance race.
- D. The windward/leeward race, if scheduled, shall be the first race of the day.

2. COURSES

- A. The Distance Race course will be designated using government marks, marks as described on the 2015-2017 South Bay Race Chart provided at registration (Note: Designated courses from the back of the South Bay Race Chart will not be used), and additional marks defined in this Attachment C
- B. No later than the Warning Signal the Race Committee will post the course on a white board on the starboard side of the Signal Boat, listing the marks in the order to be rounded and the required side to leave each mark. The Race Committee will also announce the course on VHF channel 72. Failure to hear this announcement shall not be grounds for redress. This changes RRS 60.1(b) and 62.1(a).
- C. The course will be:
 - Start
 - Special Mark "U" and offset, if used.
 - Round the marks in the designated order leaving each mark to the designated side.
 - The Finish between a staff displaying the Orange flag on the Race Committee boat displaying a blue flag and the nearby finishing mark.

3. MARKS

- A. The Finish Mark will be an Orange inflatable mark.
- B. Special Mark "U" and offset.
 - 1) The Race Committee may set special weather mark "U" as the first mark to any course by listing it on the course board and posting the magnetic bearing and distance (in nautical miles to the nearest tenth) to Mark "U" on a white board adjacent to the course board.
 - 2) If the Race Committee sets "U", it will also set an offset mark approximately eight boat lengths from "U" and at a right angle to the first leg axis.
 - 3) If "U" is set, Yachts shall leave "U" and the offset to Port for any course configuration.
 - 4) Mark "U" will be a YELLOW inflatable mark. The offset will be a red ball.
- C. Special Mark WA - Is the red can "WR6"QR located in the west passage of Narragansett Bay at 41 29.226N and 71 24.3339W (approximately ½ mile south of South Bay Chart mark WZ).
- D. The Special NYYC Temporary Inflatable Race Marks 16 and 17 as designated on the 2015-2017 South Bay Race Chart, if used, will be ORANGE inflatable buoys.
- F. Newport (Claiborne Pell) Bridge and Jamestown (Verrazano) Bridge – Yachts shall pass through the center span only for any course passing under the Newport Bridge and/or the Jamestown Bridge. For the purposes of rule 32.2(c), the center span shall be considered a gate.

4. THE START

- 4.1 The Distance Race will be started in accordance with RRS 26.
- 4.2 A yacht starting later than 5 minutes after her starting signal will be scored Did Not Start without a hearing. This changes rules A4 and A5.

- 4.3 The starting line will be between a staff displaying an orange flag on the Race Committee Signal Boat at the starboard end and a staff displaying an orange flag on the port end starting line boat.
- 4.4 The bow or sail numbers of boats subject to individual recall (RRS 29.1) and boats disqualified under RRS 30.3 may be broadcast on the VHF channel 72. This is in addition to and changes RRS 29.1 and 30.3.
- 4.5 After a general recall for a start that used starting penalty RRS 30.2 (Z Flag Rule), the RC will attempt to broadcast on VHF channel 72 the bow or sail numbers of boats that are observed to be ZFP.
- 4.6 Failure of the RC to make a broadcast or to time it accurately or the order of boat(s) hailed will not be grounds for granting a request for redress. This changes RRS 62.1(a)

5. CHANGE OF THE NEXT LEG OF THE COURSE

Once the distance race has been started the Race Committee may not change any leg of the course posted; however, the Race Committee may shorten the course or abandon the race in accordance with RRS 32.

6. THE FINISH

The finish line for the distance race will be between a staff displaying an Orange flag on a Race Committee Boat and an Orange finishing mark in the vicinity of the Northern tip of Fort Adams. In the absence of the Race Committee Boat and/or the finishing mark, the finish line will be on a bearing of 300 degrees from the Fort Adams Light "2" (Fl R 6 Sec.32 ft 7M "2" HORN).

Note: The same Race Committee boat may or may not start and finish the race.

7. TIME LIMITS

- 7.1 Boats failing to finish the Distance Race within 45 minutes after the first boat sails the course and finishes will be scored "TLE" (Time Limit Expired) without a hearing. The score for TLE shall be finishers for that race plus 1. This changes RRS 35, A4 and A5. The RC will lower the blue flag with one sound to indicate that the finish line is closed.
- 7.2 The time limit for the first boat to sail the distance race course and finish is five hours.

8. AREAS THAT ARE OBSTRUCTIONS

In the event there is racing in Narragansett Bay, competitors should be aware of heightened security around the Navy base in Newport just to the north of the Newport Jamestown Bridge. The area to the east of a line defined by a series of white buoys marking the Newport Security Zone along the coast of the Naval Facilities from Coasters Harbor to the breakwater at the north end of Coddington Cove shall rank as an obstruction. Yachts shall not enter this area. A Navy patrol boat monitors the area and vessels navigating in the Exclusionary Zone may face action by Coast Guard and Naval authorities.

